

**MEN'S V-NECK SCRUB TOP**

V-neck, chest pocket, short sleeve.

**Solids - #500**  
 Sizes . . . . . Price  
 XS to XL . . . . . \$24.00  
 2XL . . . . . \$28.00

**Print - #530**  
 Sizes . . . . . Price  
 XS to XL . . . . . \$26.00  
 2XL . . . . . \$33.00

**WOMEN'S V-POC SCRUB TOP**

V-neck, chest pocket with convenient built-in pen slot, dolman sleeve, two patch pockets and side vents.

**Poly/Cotton & Scrublite Solids - #130**  
 Sizes . . . . . Price  
 00-0 to 22-24 . . . \$27.00

**Prints - #120**  
 Sizes . . . . . Price  
 00-0 to 22-24 . . . \$28.00

**WOMEN'S BASEBALL TOP**

V-neck, snap front tunic, two large patch pockets.

**Prints - #BB**  
 Sizes . . . . . Price  
 2-4 to 22-24 . . . \$29.00

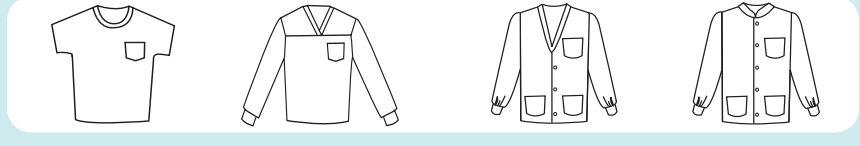
**Solids - #BB**  
 2-4 to 22-24 . . . \$29.00

**WOMEN'S TUNIC**

Scoop Neck, chest pocket, two patch pockets, side slits, set-in sleeves.

**Prints - #110**  
 Sizes . . . . . Price  
 00-0 to 22-24 . . . \$27.00  
 2XL . . . . . \$32.00

**See Maternity selection on pg. 27 (\$28.00)**



**WOMEN'S SCRUB TOP**

Scoop Neck, front & back yoke, cap sleeves & chest pocket.

**Solids - #400**  
 Sizes . . . . . Price  
 00-0 to 22-24 . . . \$24.00  
 2XL . . . . . \$30.00

**Print - #430**  
 Sizes . . . . . Price  
 00-0 to 22-24 . . . \$26.00  
 2XL . . . . . \$34.00

**MEN'S V-NECK LONG SLEEVE SCRUB TOP**

V-neck, front & back yoke, set in sleeves & chest pocket.

**Poly/Cotton Solids #500LS**  
 Sizes . . . . . Price  
 XS to XL . . . . . \$31.00  
 2XL . . . . . \$34.00

**Print - #530LS**  
 Sizes . . . . . Price  
 XS to XL . . . . . \$33.00  
 2XL . . . . . \$36.00

**WOMEN'S V-NECK LAB JACKET**

Oversized with a three-snap closure, long sleeves, two patch pockets, chest pocket.

**Poly/Cotton Solids #200**  
 Sizes . . . . . Price  
 XS to XL . . . . . \$38.00  
 2XL . . . . . \$44.00

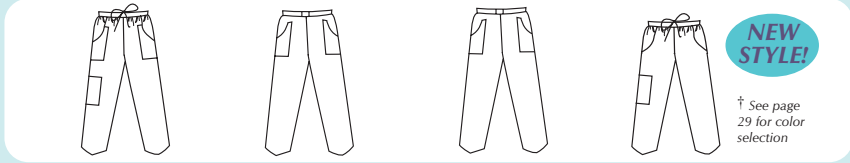
**Print - #210**  
 Sizes . . . . . Price  
 XS to XL . . . . . \$38.00  
 2XL . . . . . \$44.00

**WOMEN'S CREW-NECK LAB JACKET**

Oversized, with coordinating cuffs and collars, snap closure, long sleeves, two patch pockets, chest pocket.

**100% Cotton Prints - #610**  
 Sizes . . . . . Price  
 XS to XL . . . . . \$38.00  
 2XL . . . . . \$44.00

**NOW AVAILABLE IN WIDE LEG! †**



**NEW STYLE!**

† See page 29 for color selection

**MEN'S DRAWSTRING PANTS\***

2 front and 2 back pockets, cargo pockets, straight legs.

**Poly/Cotton and Scrublite Solids - #510**  
 Sizes . . . . . Price  
 S to XL . . . . . \$28.00  
 2XL . . . . . \$32.00

**MEN'S BELTED PANTS\***

2 front and 2 back pockets, straight legs.

**Scrublites - #510WB**  
 Sizes . . . . . Price  
 S to XL . . . . . \$27.00  
 2XL . . . . . \$29.00

**MEN'S BELTED ZIPPER PANTS\***

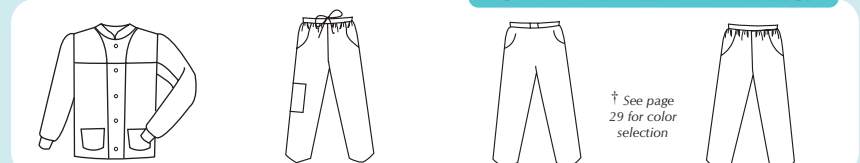
2 front and 2 back pockets, straight legs.

**Poly/Cotton Solids - #510WBZ**  
 Sizes . . . . . Price  
 S to XL . . . . . \$32.00  
 2XL . . . . . \$34.00

**WOMEN'S LOW-RISE, WIDE LEG DRAWSTRING PANTS**

2 front and a back pocket, cargo pockets, wide legs with a rise 3" shorter than regular drawstring style.

**Poly/Cotton - #410LR †**  
 Sizes . . . . . Price  
 00-0 to 22-24 . . . \$28.00



† See page 29 for color selection

**ROM JACKET & LAB COAT**

Unisex, oversized with snap closure, with our "Range of Motion" sleeve joint for maximum arm movement.

**Poly/Cotton/Scrublites - #640**  
 Sizes . . . . . Price  
 XS to XL . . . . . \$38.00  
 2XL . . . . . \$44.00

**#620 - Knee length coat available in white only**  
 Sizes . . . . . Price  
 XS to XL . . . . . \$42.00  
 2XL . . . . . \$46.00

**WOMEN'S DRAWSTRING PANTS**

2 front and a back pocket, cargo pockets, straight legs.

**Poly/Cotton and Scrublite Solids #410DS**  
 Sizes . . . . . Price  
 00-0 to 22-24 . . . \$28.00  
 2XL . . . . . \$32.00  
 Petite 00-0 to 6-8 \$28.00

**Please note: Petite's have a rise that is 1 1/2" shorter See Maternity selection on pg. 27 (\$28.00)**

**WOMEN'S BELTED PANTS**

2 front and a back pocket, tapered or wide legs. #410BL not available in size 2XL.

**Poly/Cotton Solids - #410WB (tapered) #410BL (wide leg)**  
 Sizes . . . . . Price  
 00-0 to 22-24 . . . \$26.00  
 2XL . . . . . \$29.00  
 Petite 00-0 to 6-8 \$26.00

**WOMEN'S ELASTIC WAIST PANTS**

2 front and a back pocket, tapered legs or wide legs. #410EL not available in size 2XL.

**Solids - #410 (tapered) #410EL (wide leg)**  
 Sizes . . . . . Price  
 00-0 to 22-24 . . . \$26.00  
 2XL . . . . . \$29.00  
 Petite 00-0 to 6-8 \$26.00

SIZE CHART

\* Now with slightly wider leg

WOMEN'S TOPS			MEN'S TOPS	
Size	Bust	Hip	Size	Chest
00-0	30-32	32-33	N/A	N/A
2-4	32-34	34-35	N/A	N/A
6-8	34-36	36-37	XS	34-36
10-12	36-38	38-39	S	36-38
14-16	39-40	41-43	M	38-40
18-20	42-43	45-46	L	42-44
22-24	44-45	47-48	XL	46-48
2XL	48-50	47-49	2XL	50-52

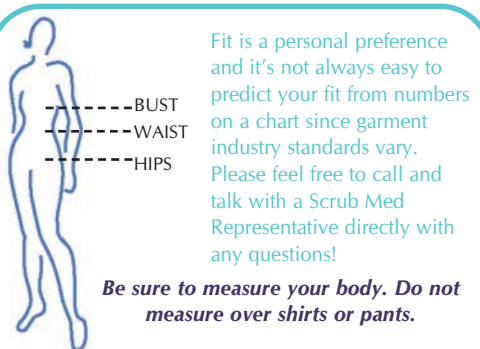
WOMEN'S PANTS*			
Size	Waist	Hip	Inseam
00-0	25-27	33-35	29
2-4	26-29	36-38	29
6-8	29-31	38-41	29
10-12	31-33	40-42	29½
14-16	33-36	41-44	29½
18-20	35-38	44-47	30
22-24	37-41	47-50	30
2XL	40-44	50-52	30

UNISEX SIZING INFORMATION		
Size	Men's Chest	Wmns' Fit
XS	34-36	6-8
S	36-38	10-12
M	38-40	14-16
L	42-44	18-20
XL	46-48	22-24
2XL	50-52	26-28

WOMEN'S LAB JACKET SIZING INFORMATION		
Size	Bust	Sleeve
XS	34	30
S	36	31
M	38	33
L	42	34
XL	44	35
2XL	48	37

MEN'S PANTS		
Size	Waist	Inseam
XS	N/A	N/A
S	31-34	30½
M	33-37	31½
L	35-39	31½
XL	37-42	32½
2XL	39-44	33

\* Styles #410BL, #410EL and #410LR have an inseam that is 2" longer than our regular inseam. Above styles are available up to size 22-24 only.



Fit is a personal preference and it's not always easy to predict your fit from numbers on a chart since garment industry standards vary. Please feel free to call and talk with a Scrub Med Representative directly with any questions!

**Be sure to measure your body. Do not measure over shirts or pants.**

**ABOUT OUR FABRICS** **About 100% Cotton Prints:** Express your individuality with our distinctive prints or coordinate them with our solids for a unique look. Expect a 5% shrinkage (approximately one size) but don't worry, we've made the adjustment so there's no need to order a larger size. **About Poly/Cotton:** Our original 7 oz. 65/35 poly/cotton poplin. Extremely durable and colorfast, this blend softens with each washing. The first choice of those who require an easy care, high-quality scrub. **About Scrublites:** Our lightweight poly/cotton Scrublites are approximately half the weight of our original poly/cotton. Ideal for the person who prefers a lighter, cooler scrub. Great for those who work in warmer climates or must wear lab jackets or gowns.

**MEASURE FOR YOUR BEST FIT**

**BUST:** Measure under your arms around fullest part of bust (with bra on). **WAIST:** Bend to one side to find the natural crease of your waist. Measure at this point, keeping tape comfortable around your waist. **HIPS:** Stand with your heels together and measure around the fullest part of your hips (about 8 inches below your waist).